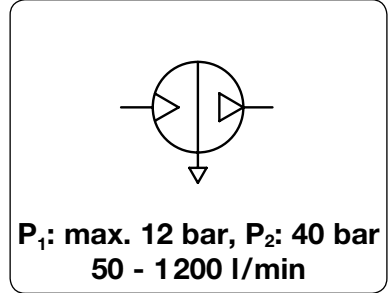


AIR AMPLIFIER STATION WITH TANK

AP

Description	The air amplifier compresses air or nitrogen from a standard pressure of 10 bar max. to the desired outlet pressure of 40 bar max. This is realised by cylinders with different ratios - simple, safe and economical. No electrical installation is required and there is no energy consumption once the final pressure has been reached. Service life 3 million cycles, full load operation 12 min max. per hour.		
Media	lubricated, unlubricated and 50 µm filtered compressed air		
Amplifier station	The pressure booster has an additional tank, pressure regulator, filter, gauge, relief valve and switch-on valve. Pressure pulsation rates are low, air consumption peaks are compensated and the operating pressure can be adjusted.		
Drive pressure P_A	system air to drive the air amplifier, 2...10 bar		
Supply pressure P₁	max. 12 bar, for instance nitrogen or the system air		
Outlet pressure P₂	amplified outlet or operating pressure of 20 bar to 40 bar maximum		
Temperature range	0 °C to 60 °C / 32 °F to 140 °F		Sound level max. 79 dB (A)
Material	Body: aluminium	Seals: NBR/Buna-N	Tank: coated steel, SST at AP40-0050



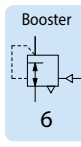
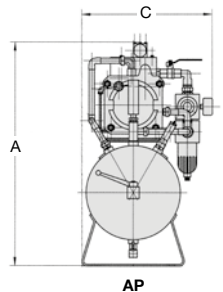
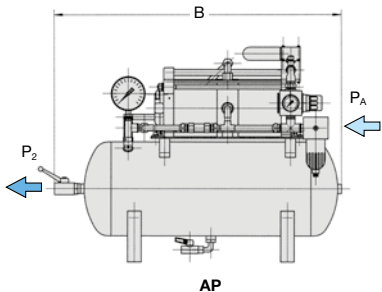
Dimensions			Weight	Tank	Connection	Transmission	Flow	P ₂	Order
A	B	C	kg	volume	thread	ratio	rate	max.	number
mm	mm	mm		l	drive P ₁ / P ₂	P _A : P ₂	l/min ¹	bar ⁵	

Air amplifier station				supply pressure P ₁ max. 12 bar, for compressed air drive pressure P _A 2...10 bar			AP			
220	400	360	13	3	G ³ / ₈	G ³ / ₈	1 : 2	580 ^{*1}	20	AP20-0580
235	400	360	16	3	G ¹ / ₂	G ¹ / ₂	1 : 2	960 ^{*1}	20	AP20-0960
656	844	381	49	40	G ³ / ₈	G ¹ / ₂	1 : 2	1200 ^{*1}	20	AP20-1200
655	844	381	58	40	G ¹ / ₂	G ¹ / ₂	1 : 3	230 ^{*2}	20	AP20-0230
365	400	133	5.3	0.8	G ³ / ₈	G ³ / ₈	1 : 4	50 ^{*3}	40	AP40-0050
655	844	381	45	40	G ¹ / ₂	G ³ / ₈	1 : 5	360 ^{*4}	40	AP40-0360

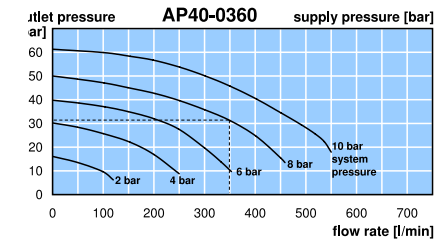
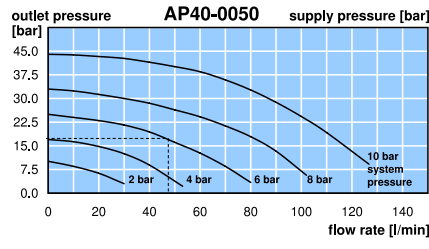
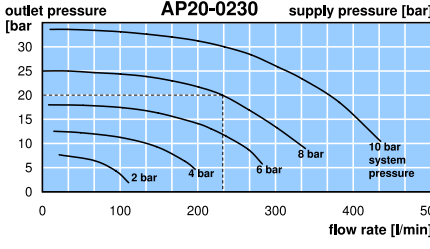
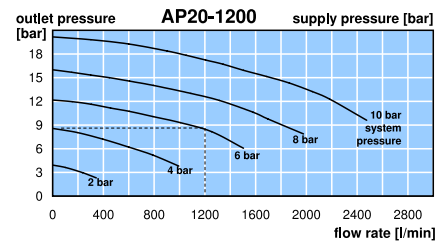
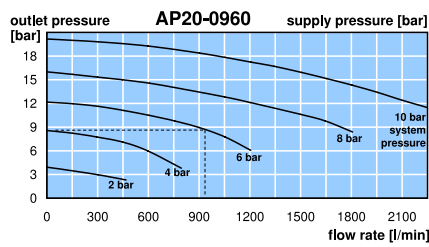
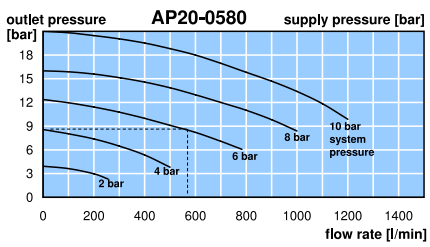


Special options, add the appropriate letter

- unlubricated operation seals FEC seals for dry compressed air or nitrogen AP...T
- Atex e.g. Ex II 3G/3D IIB x, further specifications possible AP...EX
- pressure booster for gasbis P₂ max. 1500 bar AP...6



Performance diagrams for full load operations, max. 12 min/h. 20% of the values at permanent running



*1 at 6 bar supply and 8 bar outlet pressure under full load
 *2 at 8 bar supply and 20 bar outlet pressure under full load
 *3 at 6 bar supply and 16 bar outlet pressure under full load
 *4 at 8 bar supply and 30 bar outlet pressure under full load
 *5 outlet pressure P₂ limited by the pressure stage of the accumulator, higher pressure ranges on request

Calculation examples can be found in the appendix

PDF CAD
www.aircom.net

Order example:
AP20-0580